



RESIDENTIAL

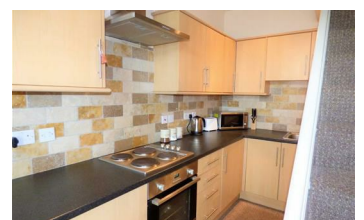
SALES | LETTINGS | PROPERTY MANAGEMENT



372 Scar Lane, Huddersfield, HD7 4AR £500 Per Calendar Month



LB ADM Residential is this well appointed, two bedroom, stone built front terrace property. Offering spacious accommodation, including gas central heating system with combination boiler and uPVC double glazing. Briefly comprising of: entrance door leading to kitchen with modern beech style fitted units and integrated appliance's, spacious modern lounge with feature fire place, and electric stove. To the first floor two bedrooms and a modern three piece white bathroom in white with shower over bath. The property is ideally situated close to all local shops and amenities, views to the front elevation, and on street parking. Viewing strictly through agents; No Pets, Non Smokers.



- Stone Built Terrace
- Lounge & Kitchen
- Gas Central Heated
- Two Well Sized Bedrooms
- Newly Decorated
- Double Glazed

55 Market Street, Milnsbridge, Huddersfield, HD3 4HZ
T: 01484 644555 | E: sales@admresidential.co.uk
www.admresidential.co.uk

